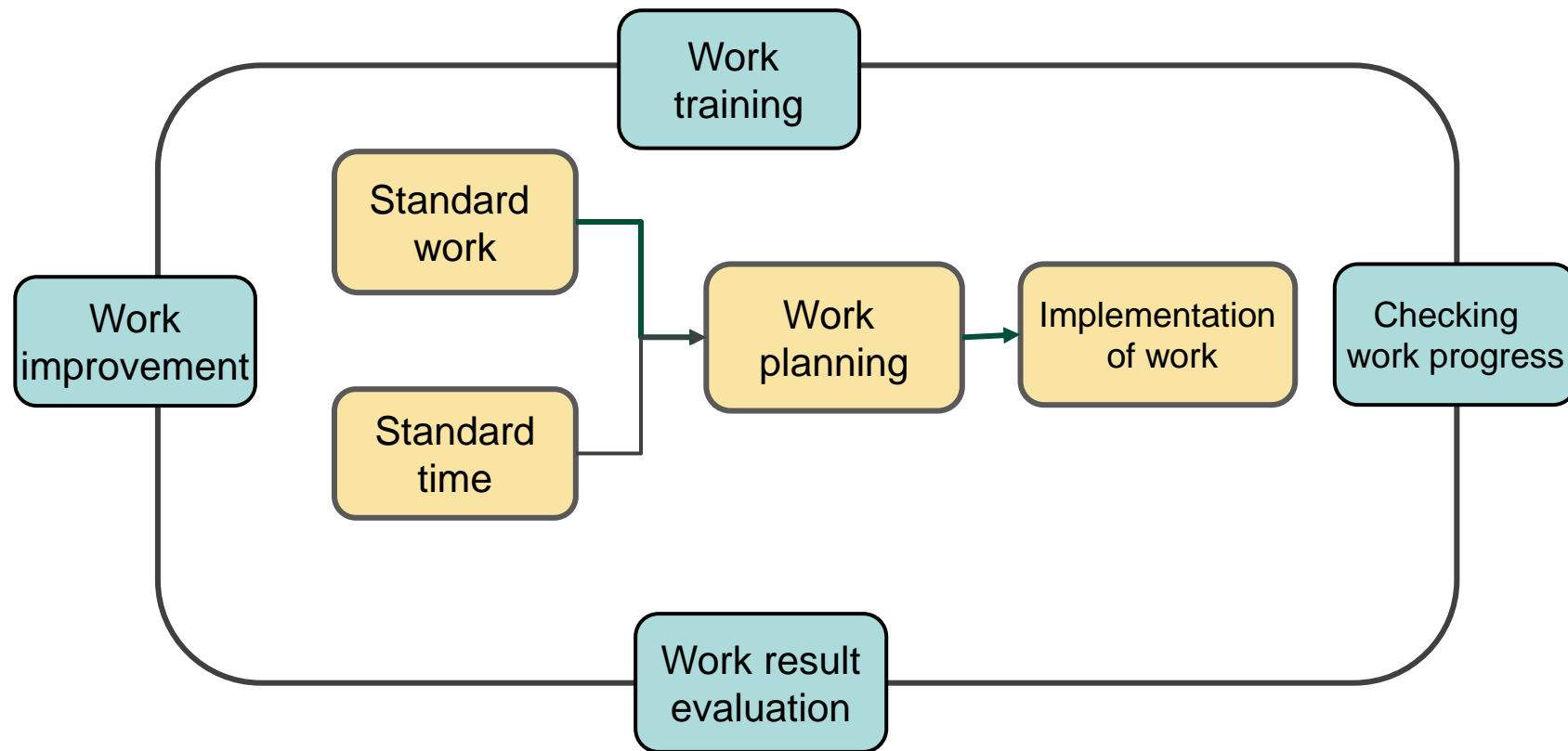
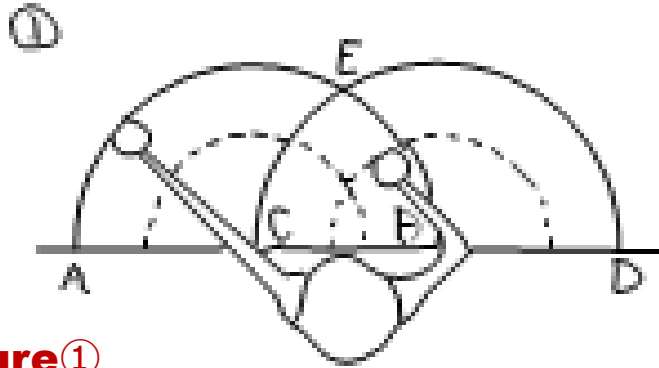


**Work
Control**

What is Work Control ?

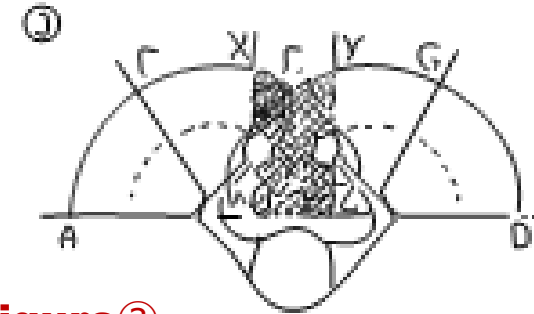
Work management is the activity of providing Standard work and Standard time through analysis and improvement, and maintaining this “Standard”.
We define work time as Standard time when an average skilled worker carries out Standard work.
Work management aims to make daily manufacturing efficient and easy to work.





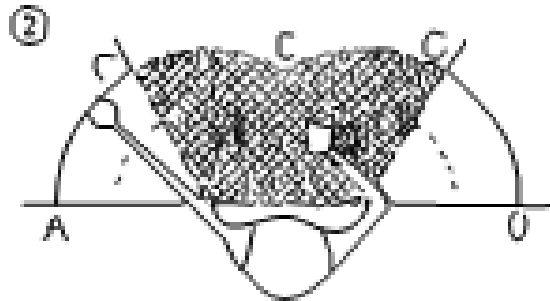
Figure①

- The widest workspace which the operator can stretch right and left hand.
- He must move the shoulder out of the space. The space surrounded by the dotted line the most effectively.



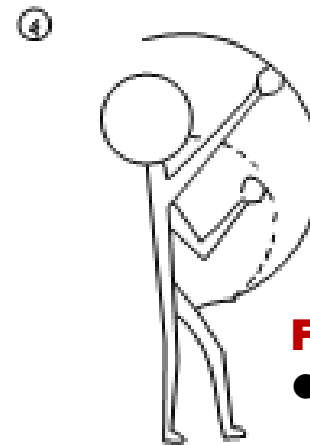
Figure③

- In the space surrounded by the slash line the operator can start and finish moving in union by using the right and left hand.



Figure②

- The operator can pick up a small material in the space surrounded by the slash line.

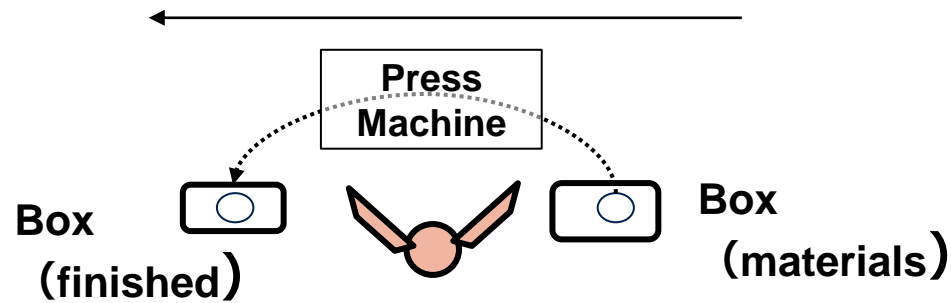


Figure④

- In the vertical space the operator can stretch hands.

Right & Left-Handed Operation Analysis

Layout



Left hand motion			Right hand motion
Waiting	D	⇒	Stretch hand out to materials
	↓	○	Pick materials up
	↓	⇒	Move them in front of press
	↓	○	Slide them into position
Stretch hand out to finished	⇒	○	Push the button
Pick finished up from press	○	D	Pick finished up from press
Put it into the product box	⇒	↓	